

Terrestrial water variability in Southern Siberia driven by permafrost degradation

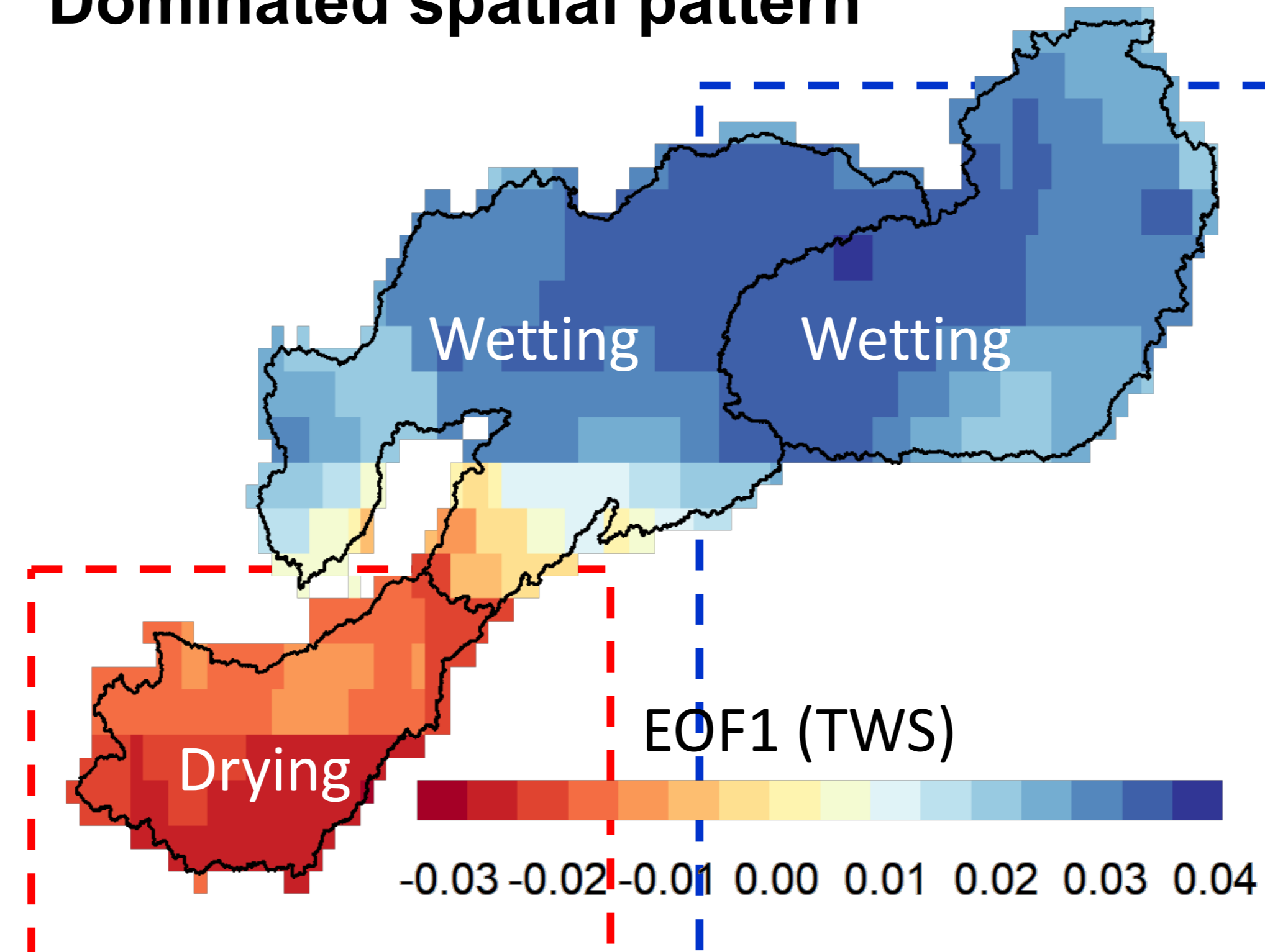
Li Han, Lucas Menzel

Institute of Geography, Heidelberg University, Germany

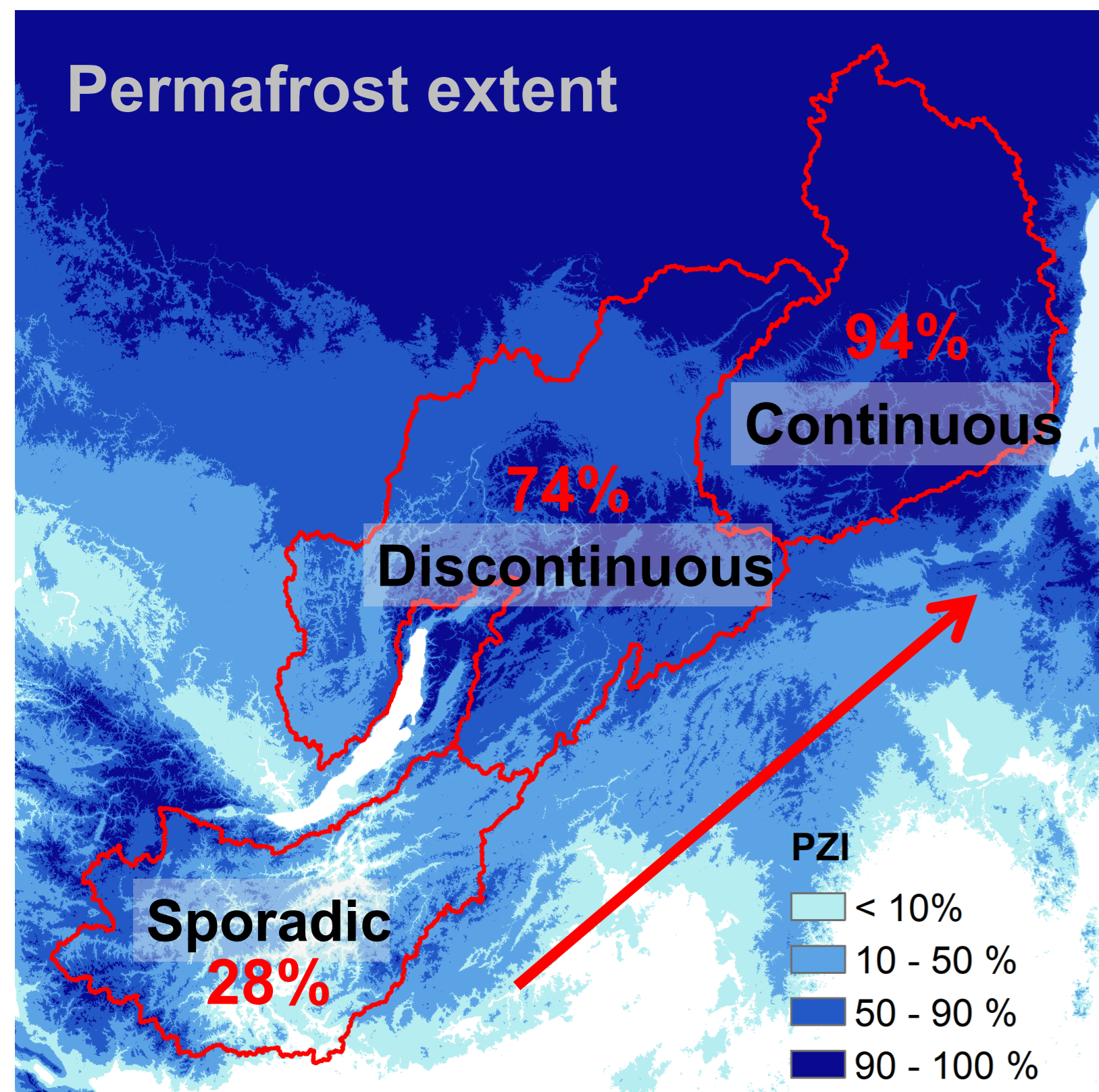
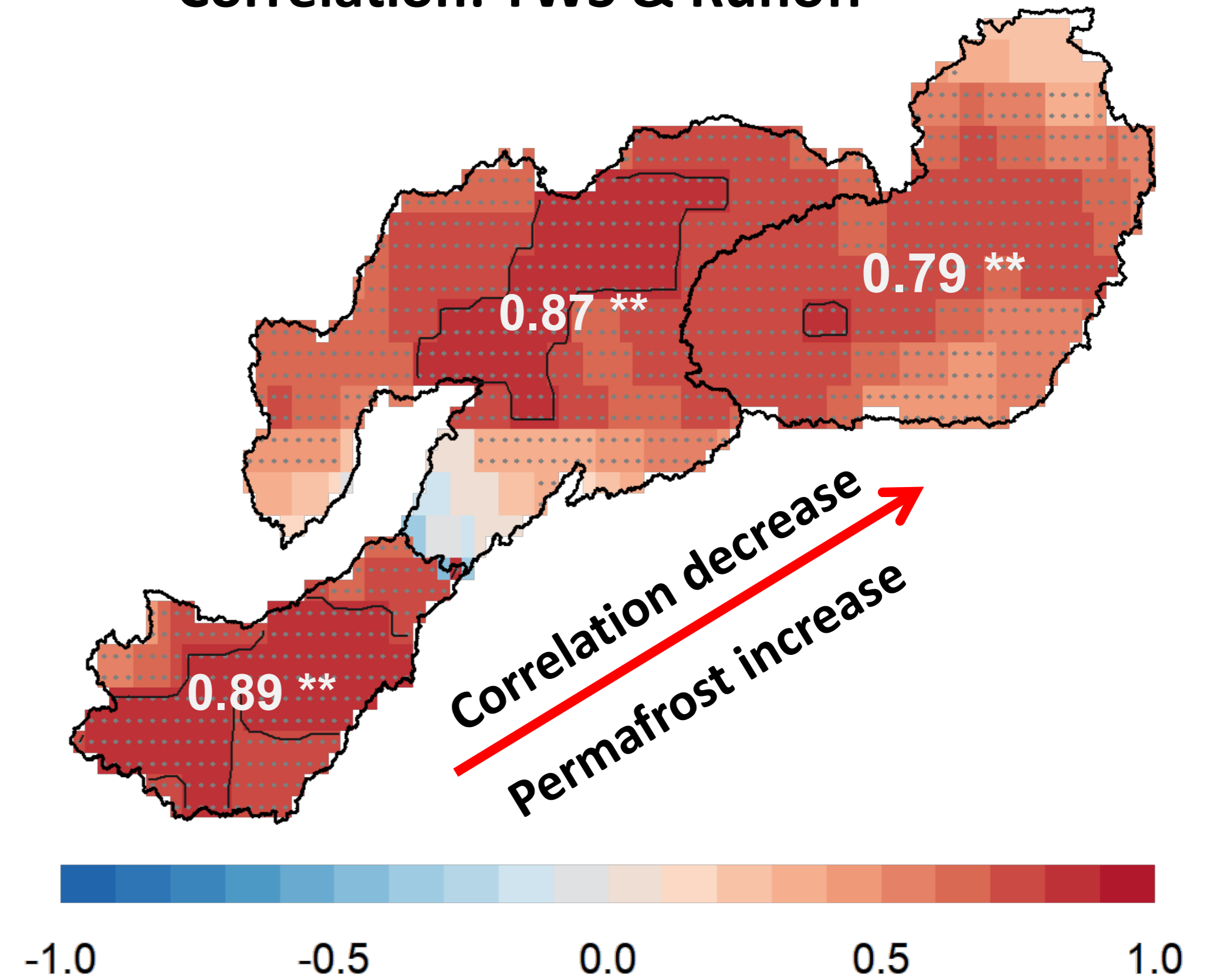
Study area



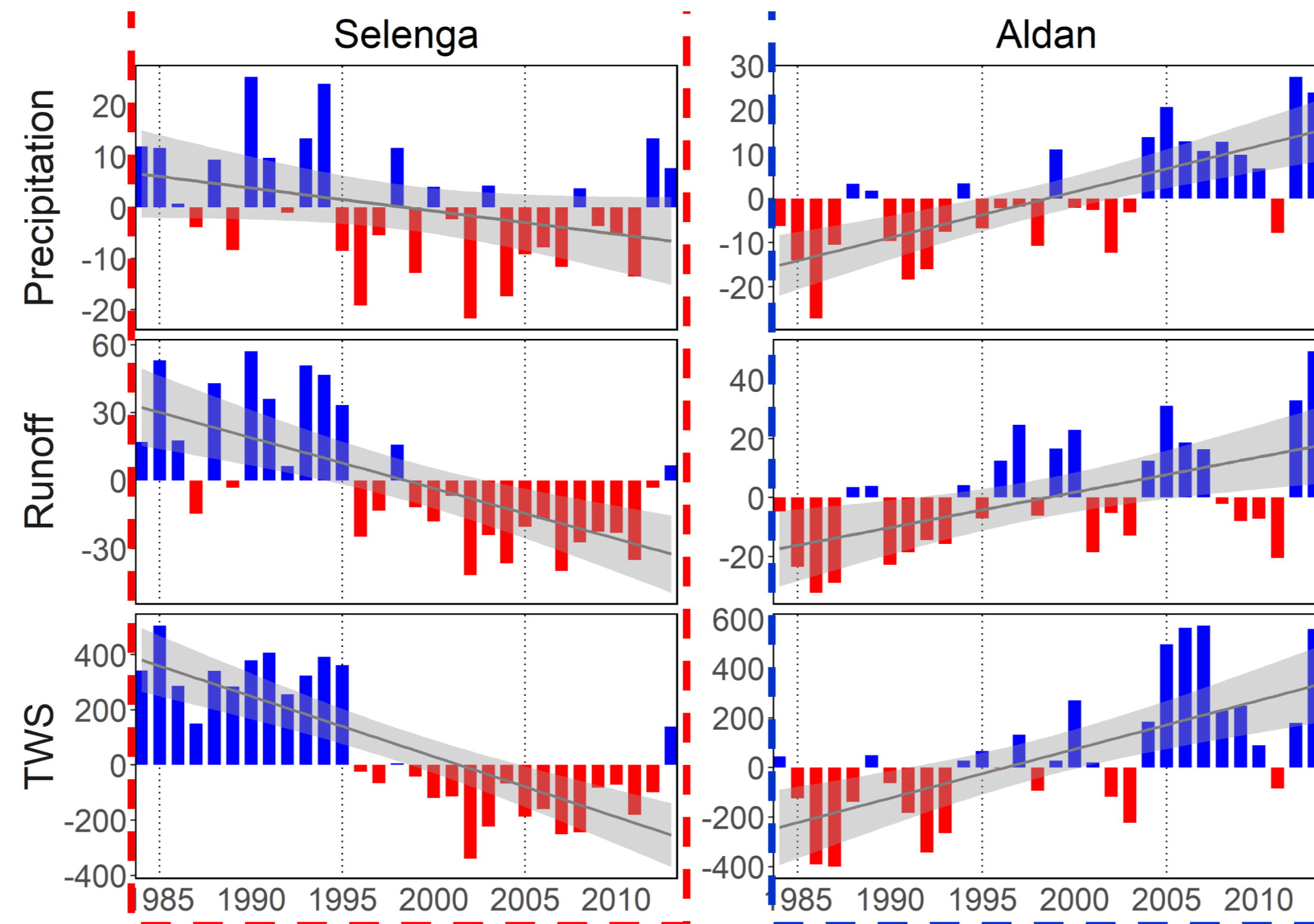
Dominated spatial pattern



Correlation: TWS & Runoff



Historical water variability



Take home messages:

- **Wetting: Continuous & Discontinuous**
- **Drying: Sporadic**
- **Stronger TWS & runoff connections in sporadic & discontinuous permafrost**

Contact: li.han@uni-heidelberg.de